



NEXGEN the Easy IVC



PEOPLE ARE TALKING ABOUT NEXGEN!

People are talking about the NexGen, and what they're saying is just amazing! Our goal in bringing the NexGen to market was to ensure it was the lightest, most cost-effective, easiest-to-use IVC system in the LAS industry. And from what we're hearing we got it right! As a matter of fact, all of this great feedback is the reason why we're calling NexGen the Easy IVC!

"It was so quiet, I could hardly hear it!"

"The functionality and manoeuvrability alone is excellent."

"Blower is simple to operate with no vibration issues."

"Impressed with how clean the cage is after two weeks."

"Impressed with how quiet the blowers are."

"All animals bred well."

"All operations have been made easier to carry out with the NexGen."

"Super simple to take cage in and out of rack."

"NexGen racks have made our job much easier. Send more quickly!"

"Sturdy and well built."

"Liked the ability to withdraw the cage so far on the runners."

"The racks are compact, stable, light, and easy to manoeuvre."



IVC MONITORING & BLOWER CONTROL

WiVarium Plus is Allentown's latest iPad / Tablet app that improves upon the functionality of its predecessor, WiVarium, by adding wireless IVC rack monitoring capabilities to an already robust list of features and benefits. WiVarium Plus allows users to monitor the full range of parameters and conditions necessary for the effective maintenance and success of your facility - all from your iPad or Tablet, and all from most anywhere in the world!

ENTIRE FACILITY COMMUNICATION

Like WiVarium, WiVarium Plus does not require a touchscreen in order to monitor and control blowers, but will work with all current-generation EcoFlo blowers, even those that have a touchscreen. Utilising WiFi or Bluetooth technology, WiVarium Plus can wirelessly communicate with some, or even all, of your blowers from a single iPad or Tablet.

INSTANT NOTIFICATIONS

Alarm notifications in WiVarium Plus are robust, easy to configure, and can alert users through email or text message at anytime, to most anywhere. Now, users can be sure that alarms are addressed quickly and effectively, before the animals or the research have been irreparably impacted.

DATA COLLECTION & REPORTING

WiVarium Plus combines an intuitive, easy-to-use interface with a 14-day device-based repository. This gives users the ability to remotely monitor research animal housing parameters, record and review collected data, generate reports, and set levels for automated alarm broadcasts via e-mail and text message.



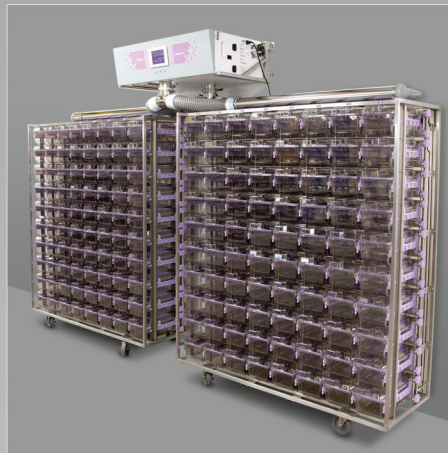
EcoFlo Multi-Rack Tower Blower with Touchscreen Control



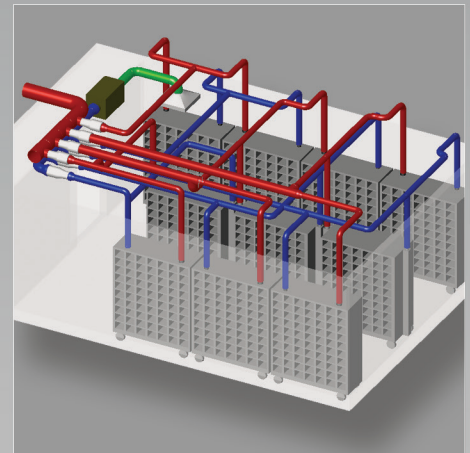
Left: EcoFlo Rack Mounted Supply Blower with Touchscreen Control



Below: EcoFlo Rack Mounted Supply Blower with WiVarius Tablet Control



EcoFlo Wall Mounted Multi-Rack Blower



Facility Integrated Airflow Solution (FIAS) Schematic

IVC AIRFLOW SOLUTIONS

Since the introduction of our first IVC in 1989, Allentown has faithfully provided industry-leading airflow solutions to support the intra-cage environment with consistency and efficiency. Understanding that no two facilities are alike, we provide airflow solutions in a wide array of flexible configurations that are either self-contained - as in the case of our EcoFlo Family of Blowers - or wholly or partially integrated with the host facility's HVAC system - as in the case of our Facility Integrated Airflow Solutions (FIAS). Additionally, Allentown's airflow solutions marry the latest and greatest technologies, with our 50-year history of excellence, to deliver IVCs that are reliable and effective.

THE ECOFLO FAMILY OF BLOWERS

The EcoFlo family of blowers from Allentown are the most energy efficient, ergonomically friendly, and quietest blowers we've ever produced. Offered in a wide variety of solution friendly configurations, including rack mounted, wall mounted, and free-standing tower,

these blowers from the Allentown family of products share the same efficiencies, ease of use, superior control, and dependability that are the hallmarks of all Allentown products.

FACILITY INTEGRATED AIRFLOW SOLUTIONS (FIAS)

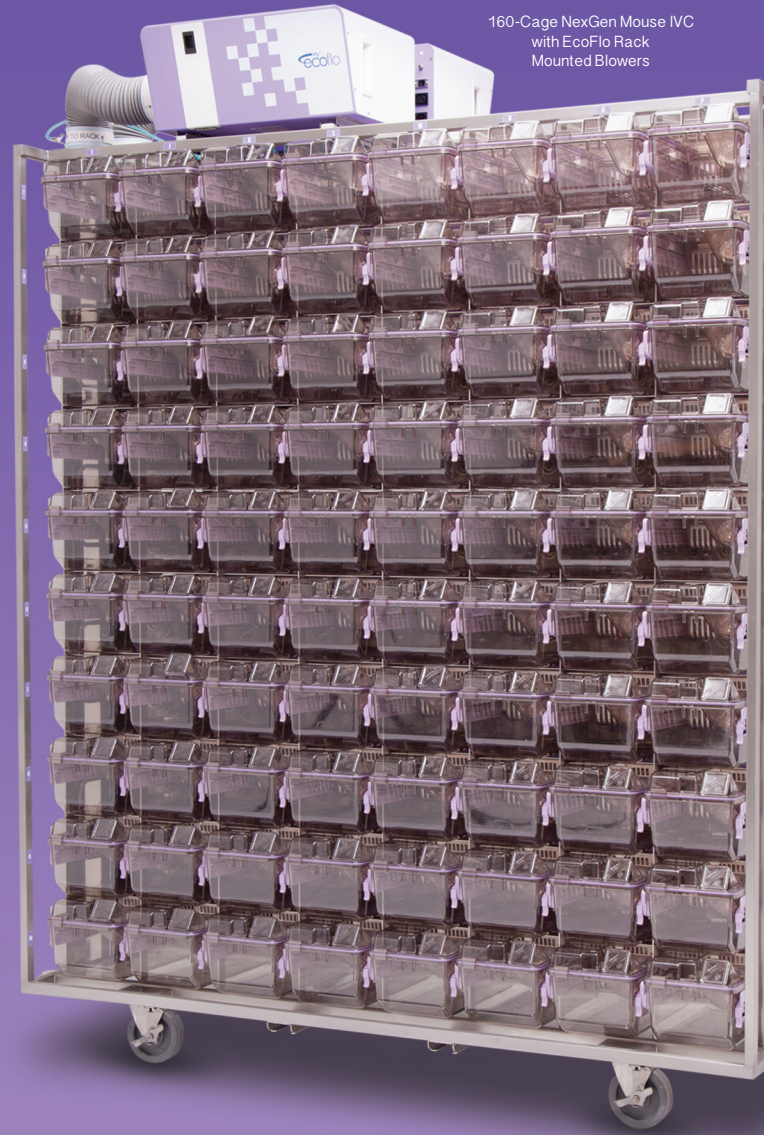
FIAS integrates IVC air delivery and exhaust with the host facility's HVAC system, placing the air handling mechanics either above the ceiling in the interstitial space or in another similar space located near the holding room. During the planning of a new facility or renovation, customers have the ability to work with their Architect, Lab Planner and Housing Provider months - and sometimes years - ahead of time in order to design the most efficient facility possible. Using FIAS for IVC holding rooms is a proven way of reducing the number of blowers per room, consolidating systems and reducing energy consumption all while consistently meeting precise airflow requirements.



80-Cage NexGen Mouse IVC
with EcoFlo Tower Blower



160-Cage NexGen Mouse IVC
with EcoFlo Rack
Mounted Blowers



NEXGEN MOUSE IVC

AN IVC IS BORN!

The NexGen Mouse IVC was the first in our line of NexGen rodent housing solutions. It was completely re-engineered from the ground up, leveraging Allentown's more than 20 years of IVC experience to produce a rack that is not only less expensive, but also smaller, lighter, and quieter than other IVCs, while still retaining the quality, strength, and durability that has come to be the hallmark of all Allentown solutions.

Leading the way and setting the standard for future NexGen IVCs, and indeed for all IVCs across the industry, the NexGen Mouse IVC proves that form and function do indeed go hand in hand, and that the LAS community need not sacrifice quality and performance for value and affordability.

NexGen Lo-Profile Rack Specifications											
Size	Depth		Width		Rack Height		Plenum Height		Matrix		Sides
	inch	mm	inch	mm	inch	mm	inch	mm	Col.	Row	
127mm / 5" Casters											
60	24.5	622	51.688	1313	80.076	2034	81.202	2063	6	10	1
70	24.5	622	59.750	1518	80.076	2034	81.202	2063	7	10	1
80	24.5	622	67.812	1722	80.076	2034	81.202	2063	8	10	1
120	35.0	889	55.818	1418	80.076	2034	81.202	2063	6	10	2
140	35.0	889	63.919	1624	80.076	2034	81.202	2063	7	10	2
160	35.0	889	71.981	1828	80.076	2034	81.202	2063	8	10	2
89mm / 3.5" Casters with Top Plate											
60	24.5	622	51.688	1313	78.589	1996	79.715	2025	6	10	1
70	24.5	622	59.750	1518	78.589	1996	79.715	2025	7	10	1
80	24.5	622	67.812	1722	78.589	1996	79.715	2025	8	10	1
120	35.0	889	55.818	1418	78.589	1996	79.715	2025	6	10	2
140	35.0	889	63.919	1624	78.589	1996	79.715	2025	7	10	2
160	35.0	889	71.981	1828	78.589	1996	79.715	2025	8	10	2

MOUSE CAGE SYSTEMS & COMPONENTS

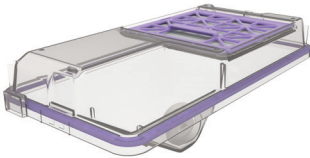


Standard Cage System with External Bottle Top
 194mm x 181mm x 398mm | 7.625" x 7.110" x 15.680"
 Floor space: 500 cm² | 77.5 in²



Edge Cage System with Micro Barrier Top
 194mm x 178mm x 397mm | 7.625" x 7.020" x 15.638"
 Floor space: 535 cm² | 83 in²

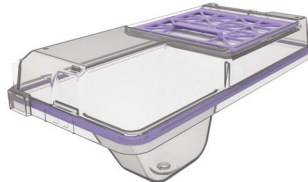
Tops



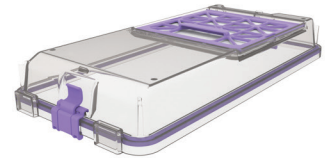
External Bottle Top
 Available with or without Locks
 194mm x 114mm x 397mm | 7.625" x 4.474" x 15.638"
 Item #: 224464-5



Dual External Bottle Top
 Available with or without Locks
 194mm x 114mm x 398mm | 7.625" x 4.474" x 15.680"
 Item #: 224437-1

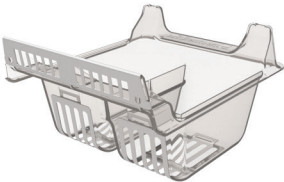


External Hydropac® Top*
 Available with or without Locks
 194mm x 127mm x 397mm | 7.625" x 4.984" x 15.638"
 Item #: 226913-2

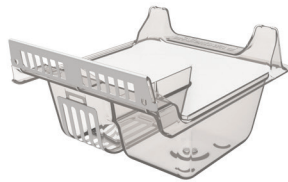


Micro Barrier Top
 Available with or without Locks
 194mm x 55mm x 398mm | 7.625" x 2.150" x 15.680"
 Item #: 223611-4

Feeders



PFT Dual Feeder
 220mm x 116mm x 178mm | 8.664" x 4.563" x 7.026"
 Item #: 225663-1



PFT Feeder / Hydropac® / Bottle
 220mm x 116mm x 178mm | 8.664" x 4.563" x 7.026"
 Item #: 225664-1

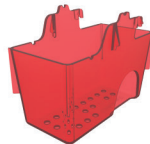


Wire Bar Lid
 178mm x 74mm x 375mm | 7.000" x 2.909" x 14.750"
 Item #: 412483



Half Pocket Wire Bar Lid
 222mm x 113mm x 177mm | 8.750" x 4.459" x 6.986"
 Item #: 314677

Nesting Box

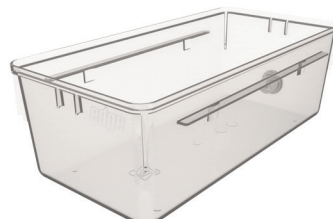


60mm x 78mm x 102mm | 2.361" x 3.078" x 4.008"
 Item #: 315680

Cage



NexGen Cage
 Automatic Watering not shown
 194mm x 130mm x 381mm | 7.620" x 5.130" x 15.010"
 Item #: 223581-4



NexGen Edge Cage
 Automatic Watering not shown
 194mm x 130mm x 381mm | 7.620" x 5.130" x 15.010"
 Item #: 223580-4

*The feeder/watering device is approved by Hydropac/Lab Products, Inc. for use with Hydropac® branded valves and pouches.

All Dimensions Shown (Width x Height x Depth)

35-Cage NexGen 900 Rat IVC
with EcoFlo Rack Mounted Blowers



70-Cage NexGen 900 Rat IVC
with EcoFlo Rack Mounted Blowers



NEXGEN RAT 900 IVC

FRATERNAL TWIN

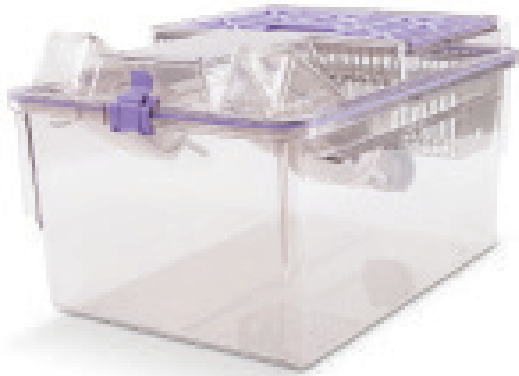
With all the positive things that people in the LAS industry have said about the Allentown NexGen Mouse IVC, it seemed only logical that we would expand the Easy IVC family to include a big brother! The NexGen Rat 900 provides all of the value that you've come to expect from a NexGen IVC, yet tailored to the specific requirements and sizes necessary for today's rat research initiatives. Want to group house large numbers of mice? The 900's large size is perfect for that as well!

And because flexibility and options are what Allentown is all about, we also offer the NexGen Rat Combo IVC! The Combo contains both the 900 and 1800 sizes of NexGen Rat cages (more about the 1800 later in this brochure) so that researchers can maximize their resources and floor space and perform different types of rat research on the same IVC!

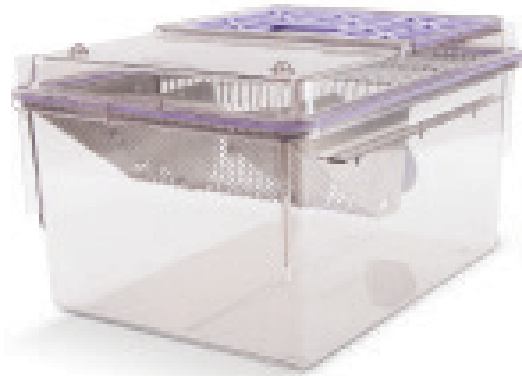
NexGen Rat 900 Rack Specifications

Size	Depth		Width		Rack Height		Plenum Height		Matrix		Sides
	inch	mm	inch	mm	inch	mm	inch	mm	Col.	Row	
127mm / 5" Casters											
30	24.5	622	65.066	1653	67.260	1708	68.410	1738	5	6	1
35	24.5	622	65.066	1653	77.200	1961	78.350	1990	5	7	1
60	35.0	889	69.250	1759	67.260	1708	68.410	1738	5	6	2
70	35.0	889	69.250	1759	77.200	1961	78.350	1990	5	7	2

RAT 900 CAGE SYSTEMS & COMPONENTS



Cage System with External Bottle Top
300mm x 246mm x 412mm | 11.806" x 9.71" x 16.220"
Floor space: 916 cm² | 142 in²



Cage System with Micro Barrier Top
300mm x 235mm x 410mm | 11.806" x 9.255" x 16.157"
Floor space: 916 cm² | 142 in²

Tops

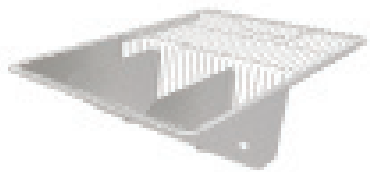


External Bottle Top
Available with or without Locks
300mm x 115mm x 410mm | 11.806" x 4.518" x 16.157"
Item #: 225440-2



Micro Barrier Top
Available with or without Locks
300mm x 49mm x 412mm | 11.806" x 1.930" x 16.220"
Item #: 225556-2

Feeders



Wire Bar Lid
283mm x 99mm x 388mm | 11.142" x 3.904" x 15.271"
Item #: 412417



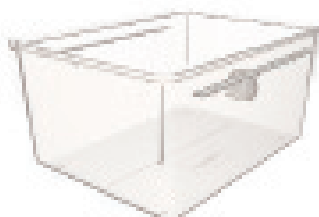
Half Pocket Wire Bar Lid
283mm x 122mm x 216mm | 11.142" x 4.812" x 8.495"
Item #: 412410

Nesting Box



189mm x 106mm x 90mm | 7.430" x 4.188" x 3.525"
Item #: 315584

Cage



Automatic Watering not shown
300mm x 194mm x 394mm | 11.818" x 7.630" x 15.530"
Item #: 225720-1

30-Cage NexGen 1800 Rat IVC
with EcoFlo Rack Mounted Blowers



COMBO RACK
15-Cage NexGen Combo Rat IVC
(5 Rat 900 Cages & 10 Rat 1800 cages)
with EcoFlo Rack Mounted Blowers



NEXGEN RAT 1800 IVC

THE FAMILY CONTINUES TO GROW!

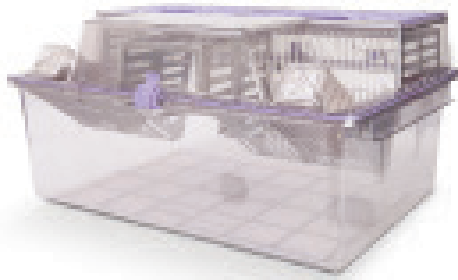
Building upon the success of NexGen Rat 900, Allentown responded to industry demand for larger, yet more manageable rat housing with the introduction of NexGen Rat 1800. With 1800 cm² / 279 in² total floor space and a cage height of 25 cm / 10 in, the new cage has a wider, more ergonomic design for balanced weight distribution during handling, plus ergonomic handles on side of cage for ease of manipulation.

And because flexibility and options are what Allentown is all about, we also offer the NexGen Rat Combo IVC! The Combo contains both the 1800 and 900 sizes of NexGen Rat cages (the 900 is detailed earlier in this brochure) so that researchers can maximize their resources and floor space and perform different types of rat research on the same IVC!

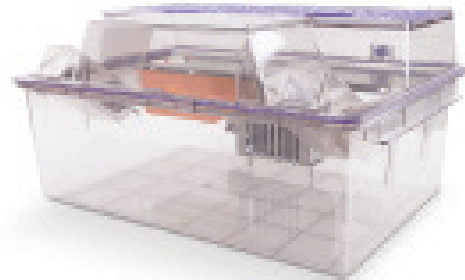
NexGen Rat 1800 Rack Specifications											
Size	Depth		Width		Rack Height		Plenum Height		Matrix		Sides
	inch	mm	inch	mm	inch	mm	inch	mm	Col.	Row	
127mm / 5" Casters											
10	24.5	622	50.506	1283	66.816	1697	67.972	1726	2	5	1
15	24.5	622	74.101	1882	66.816	1697	67.972	1726	3	5	1
20	35.0	889	54.675	1389	66.816	1697	67.972	1726	2	5	2
30	35.0	889	78.270	1988	66.816	1697	67.972	1726	3	5	2

NexGen Rat Combo Rack Specifications											
Size	Depth		Width		Rack Height		Plenum Height		Matrix		Sides
	inch	mm	inch	mm	inch	mm	inch	mm	Col.	Row	
127mm / 5" Casters											
15	24.5	622	63.256	1607	66.550	1690	67.710	1720	3	5	1
30	35.0	889	66.925	1700	66.816	1697	68.472	1739	3	5	2

RAT 1800 CAGE SYSTEMS & COMPONENTS



Cage System with Wire Bar Lid & Front Loft
 572mm x 287mm x 412mm | 22.511" x 11.285" x 16.220"
 Floor space: 1805 cm² | 280 in²



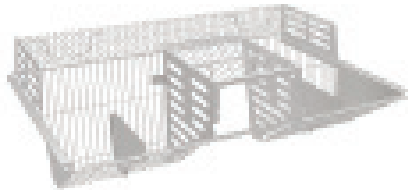
Cage System with Rear Shelf & Nesting Box
 572mm x 287mm x 410mm | 22.511" x 11.285" x 16.157"
 Floor space: 1805 cm² | 280 in²

External Bottle Top



Available with or without Locks
 572mm x 171mm x 412mm | 22.511" x 6.742" x 16.220"
 Item #: 226232-2

Wire Bar Lid



553mm x 170mm x 388mm | 21.766" x 6.683" x 15.256"
 Item #: 413126

Front Loft



150mm x 8mm x 89mm | 5.923" x .297" x 3.500"
 Item #: 227356

Rear Shelf (WBL Attachment)



538mm x 13mm x 138mm | 21.188" x .500" x 5.435"
 Item #: 227694

Nesting Box



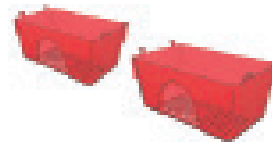
189mm x 106mm x 90mm | 7.430" x 4.188" x 3.525"
 Item #: 315584

Rear Shelf (Stand Alone)



552mm x 18mm x 387mm | 21.719" x 0.689" x 15.249"
 Item #: 227429

Nesting Box



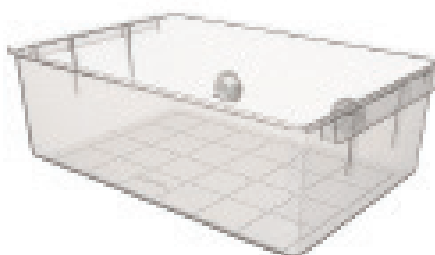
189mm x 106mm x 90mm | 7.430" x 4.188" x 3.525"
 Item #: 315584

Hanging Feeder



141mm x 185mm x 96mm | 5.562" x 7.285" x 3.794"
 Item #: 227564

Cage



Automatic Watering not shown
 588mm x 194mm x 395mm | 23.161" x 7.644" x 15.534"
 Item #: 226231-1

PARTNERS IN QUALITY.
PARTNERS IN SERVICE.
PARTNERS IN RESEARCH.

Allentown, Inc is the leading global provider of quality built research animal housing and products to the biomedical research community. For close to 50 years, we have produced innovative and superior animal housing solutions that continue to exceed industry standards. Our success is based on our strong business integrity, our exacting attention to manufacturing detail, and our unwavering dedication to customer service.

Our state of the art manufacturing facility qualifies us to provide timely, cost-effective solutions for our customers' research needs. From design and development through automated fabrication and welding, Allentown housing solutions are manufactured with tight tolerances to precise specifications. Our experienced team combines craftsmanship with innovation, constantly refining our manufacturing process to ensure our customers the highest quality at the most competitive price.



ANIMA LAB
animal facility and laboratory equipment • animal research models

animalab.eu

mail: info@animalab.eu