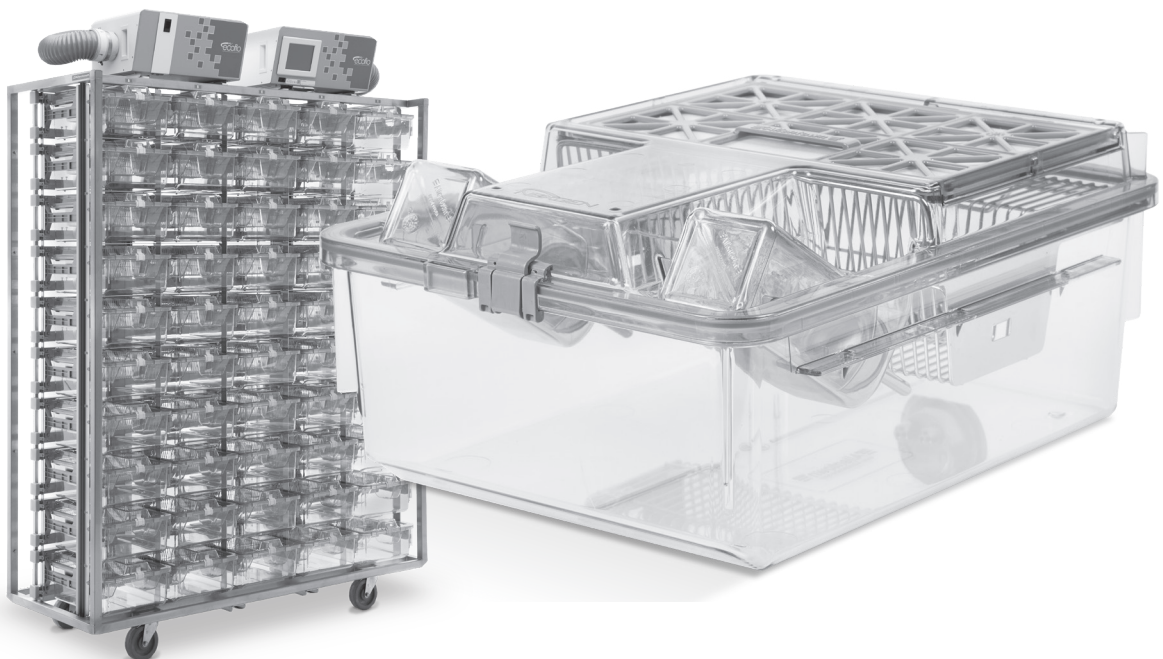


**Your trusted global partner
in life-saving research.**

For over 50 years, Allentown has provided critical solutions to the biomedical research community. Our high-quality equipment and advanced vivarium systems continue to define and exceed industry standards. Like everything we do, our unparalleled customer service is stamped with the Allentown hallmarks of integrity, dedication and care.

NexGen™

MOUSE 900



OVERVIEW

Providing critical solutions with integrity and care.



NexGen Mouse 900

The lightest, most cost-effective, easiest-to-use animal-friendly IVC system in the LAS industry, now configured for group-mouse housing.

Smooth sliding, easy gliding cage docking / undocking (Validated by third-party ergonomist)

Low vibration spares animals and staff from discomfort

Reduced need to move animals or clean out cages

Observation made easier and faster

“Super easy to take cage out of rack”

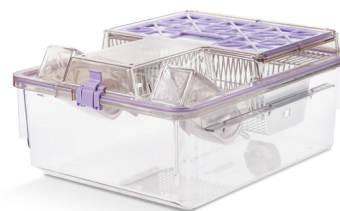
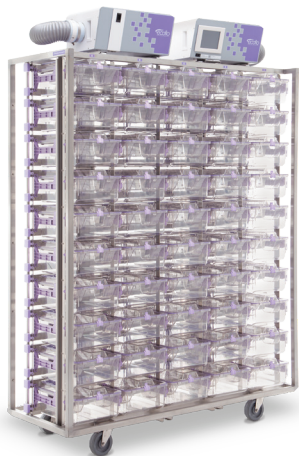
“It’s so quiet I can barely hear it”

“The functionality and maneuverability alone are excellent”

“All the animals bred well”

“Blower is simple to operate with no vibration issues”

COMPONENTS



IVC System

Positive or negative precision air controlled rack

Exhaust plenum always negative to the room

45 and 90 cage capacities available

Whole rack system and cages are autoclavable up to 134 °C¹ and chemically sterilisable

Plastic (polysulfone) cage support runners with integrated spring-operated cage lock with docking indicator

Ergonomic, single finger motion docking with auto-locking feature

Multi-directional 127 mm and 89 mm diameter stainless steel casters with gray polypropylene wheels with sealed ball bearings and four foot-operated brakes

Dismantable horizontal airflow manifolds with tethered dual plastic end caps for ease of cleaning

Rear exhaust and supply plenum configurations for single-sided IVCs, or same side exhaust and supply plenum configurations for double-sided IVCs

100 mm diameter vertical supply and 100 mm diameter vertical exhaust plenums with back and bottom door access

304 stainless steel, welded frame construction, utilizing both square and rectangular structural tubing

Cage air tubes are 304 stainless steel

Automatic watering available

Row and column identification labels

Model number and serial number identification labels

Compatible with all configurations of EcoFlo™ blowers

Compatible with WiVarium Plus™ and Wi-Com Vantage™

Compatible with Sentinel™ EAD® colony health monitoring system

Compatible with Wi-Com Sensus™ RFID census solution

Cage System

Cage floor space of 916 cm² to permit group housing and breeding

Clear polysulfone plastic

Gasketed cage lid ensures safety and protection from damage

Clear cage and flip-up / stay-up cardholders improve observations

Easily accessible water bottles (EBT)

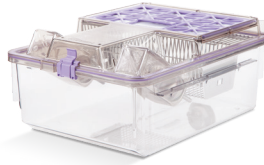
Hinged filter retainer swings up for easy filter replacements

Compact nesting and stacking for more efficient autoclaving throughput

Available with or without locks and with multiple feeder configurations

COMPONENTS

Cage System with External Bottle Top
300 mm x 178 mm x 412 mm
Floor space: 916 cm²



Cage System with Hydropac® Top*
300 mm x 178 mm x 412 mm
Floor space: 916 cm²

Bottle



250 mL | 281 g (filled)
Item # PC250BCL+SLC



350 mL | 395 g (filled)
Item # PC350BCL+SLC

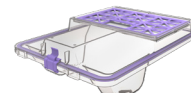
Top



External Bottle Top
300 mm x 115 mm x 410 mm | 885 g
Item # 225440-1 (without locks)
Item # 225440-2 (with locks)



Micro Barrier Top
300 mm x 49 mm x 412 mm | 748 g
Item # 225556-1 (without locks)
Item # 225556-2 (with locks)



External Hydropac® Top*
300 mm x 127 mm x 410 mm | 907 g
Item # 229382-1 (without locks)
Item # 229382-2 (with locks)

Cardholder

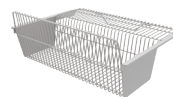


76 mm x 102 mm Vertical
Item # VH34P9-8
(also available in 76 mm x 127 mm
Item # VH35P9-8)



76 mm x 102 mm Horizontal
Item # HH34P9-8
(also available in 76 mm x 127 mm
Item # HH35P9-8)

WBL / Feeder



Half Pocket Wire Bar Lid
Food capacity: 998 g
285 mm x 112 mm x 215 mm | 544 g
Item # 413935

Enrichment



Cage Divider
51 mm x 174 mm x 372 mm | 236 g
Item # 229464



Safe Harbor Mouse Retreat™
64 mm x 70 mm x 114 mm | 50 g
Item # SHMR001



Mouse Mezzanine™
160 mm x 172 mm x 170 mm | 86 g
Item # SMMEZZ

Cage



Cage
300 mm x 137 mm x 395 mm | 953 g
Item # 229743-1 (without automatic watering)
Item # 229743-2 (with automatic watering)

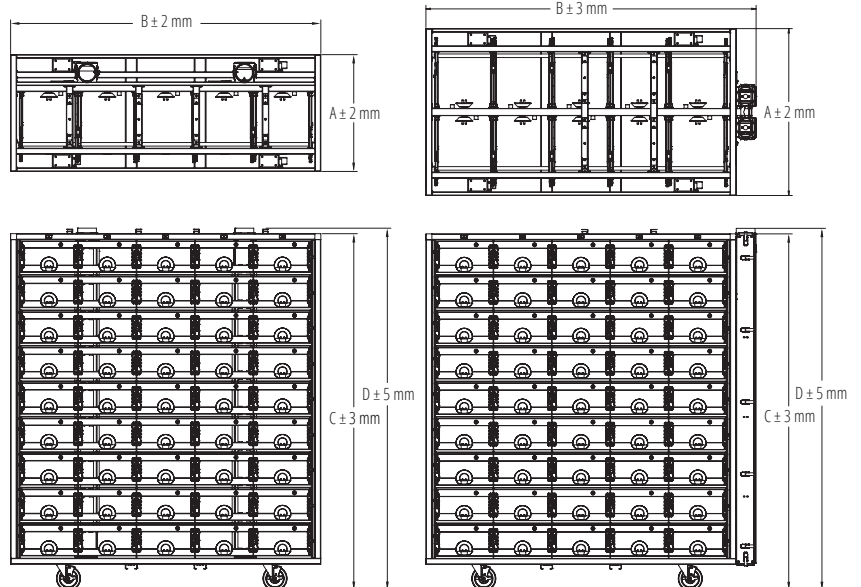
SPECIFICATIONS

Size	Depth (A)	Width (B)	Height ¹ (C)	Height ^{1,2} (D)	Matrix		Sides	Weights ³ (loaded)	Weights ³ (unloaded)	Animal Capacity	ACH	Supply Air	Exhaust Air (+)	Exhaust Air (-)	Energy Use	Heat Load
	mm	mm	mm	mm	Col.	Row		kg	kg			m ³ / hr	m ³ / hr	m ³ / hr	Watts	Watts
127 mm Casters																
45	622	1653	1900	1930	5	9	1	226	146	405	50	24.6	17.8	36.5	9.5	8.6
90	889	1759	1900	1930	5	9	2	390	216	810	50	49.3	36.5	73.1	9.9	8.9
89 mm Casters																
45	622	1653	1862	1892	5	9	1	226	146	405	50	24.6	17.8	36.5	9.5	8.6
90	889	1759	1862	1892	5	9	2	390	216	810	50	49.3	36.5	73.1	9.9	8.9

Note: a.) Airflow at sea-level b.) Rack weight without blowers, animals, bedding or watering c.) Airflow tolerance ± 10 % d.) Other configurations available.
¹ Height includes casters. Add 247 mm to 297 mm for rack mounted blowers ² Height includes removable runners and collars ³ All weights are approximations

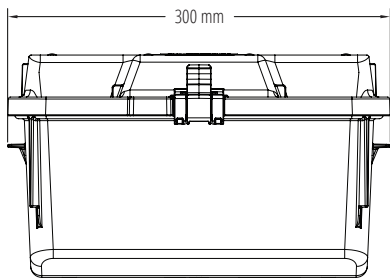
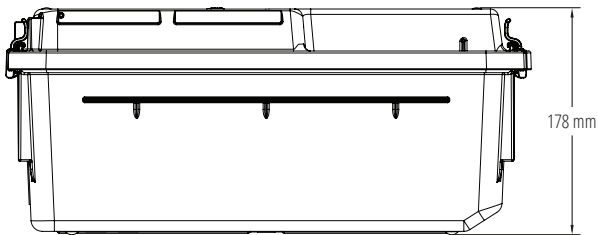
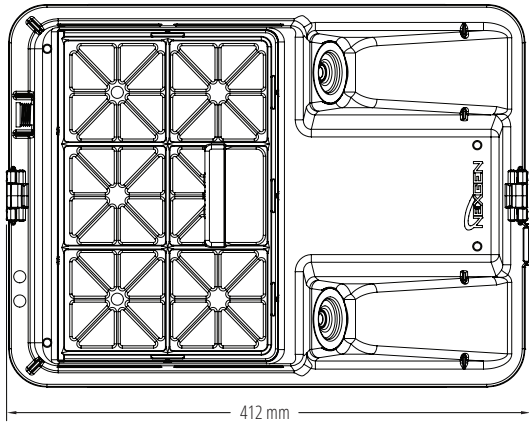
Notes

- 89 mm or 127 mm diameter casters
- Optional top panel
- Optional bumpers may change dimensions
- Multiple blower configurations



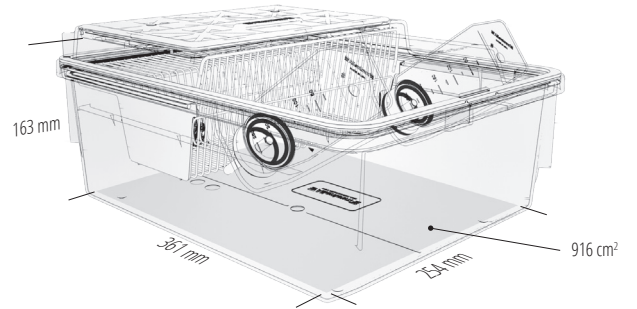
SPECIFICATIONS

External Dimensions



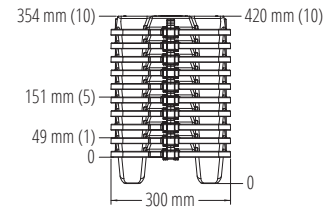
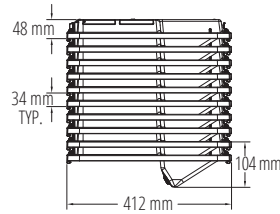
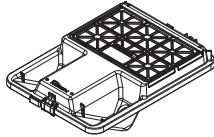
Internal Dimensions

Half Pocket

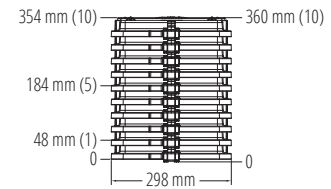
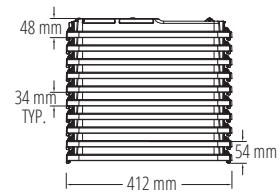
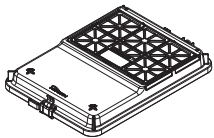


SPECIFICATIONS

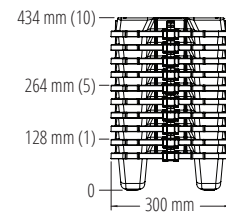
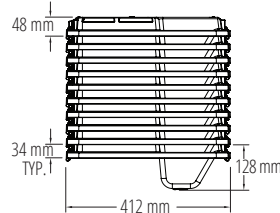
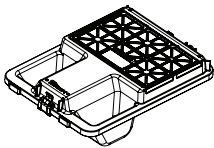
External Bottle Top



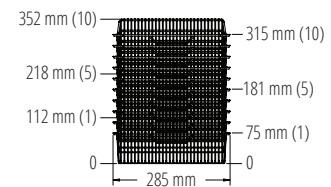
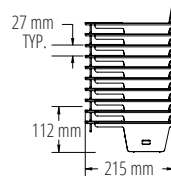
Micro Barrier Top



External Hydropac Top



Half Pocket Wire Bar Lid



Cage

